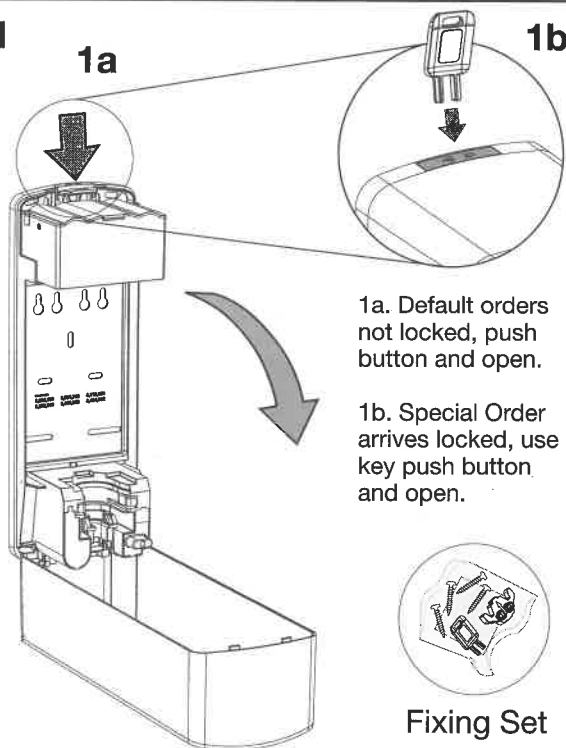


1

1a



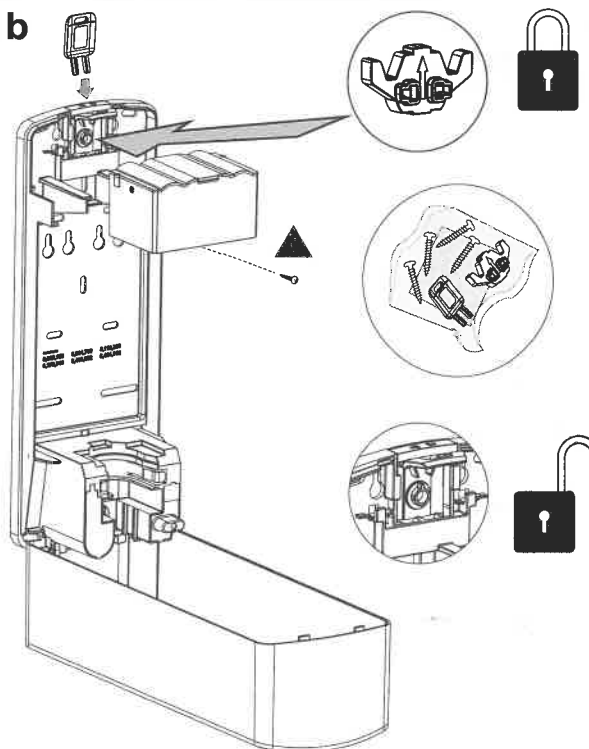
1a. Default orders
not locked, push
button and open.

1b. Special Order
arrives locked, use
key push button
and open.

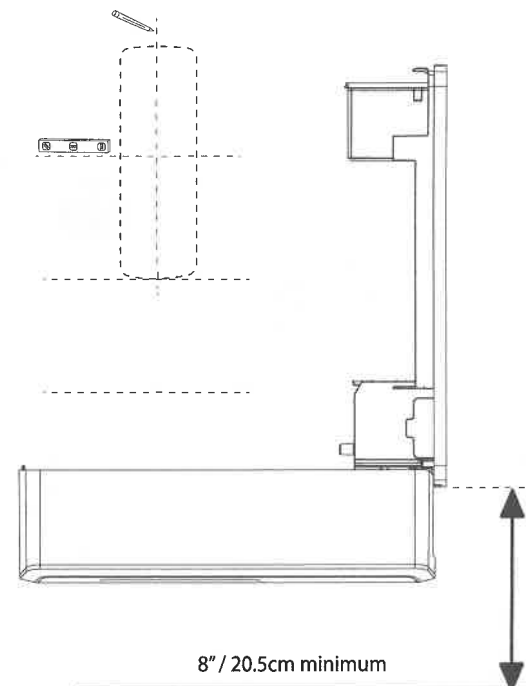


Fixing Set

1b

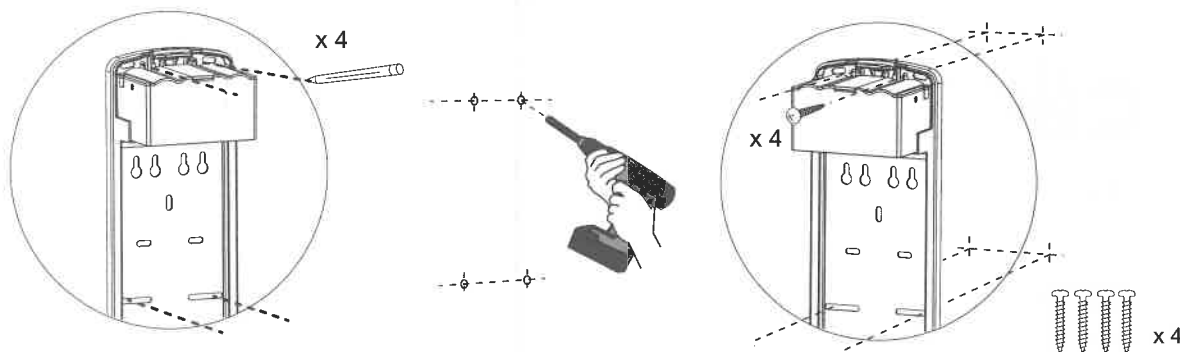


2



8" / 20.5cm minimum

3a

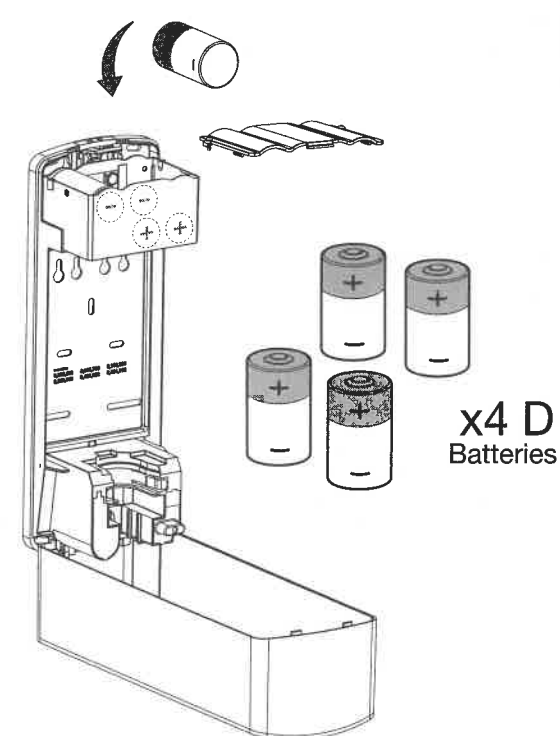


x 4

x 4

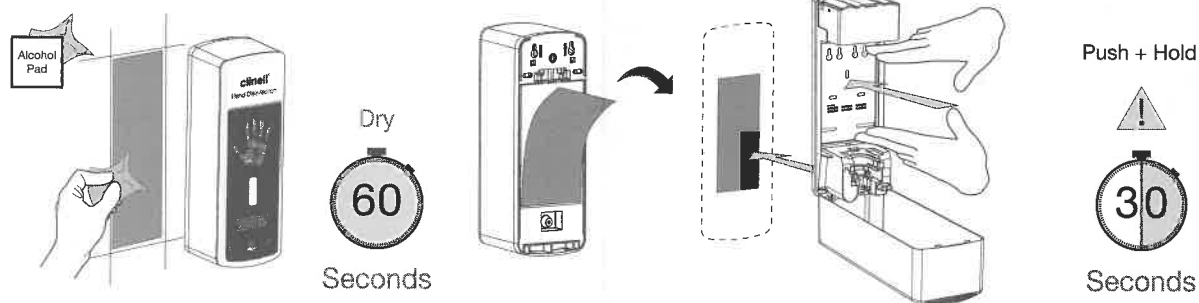
x 4

4



x4 D
Batteries

3b



Alcohol
Pad

Dry

60

Seconds

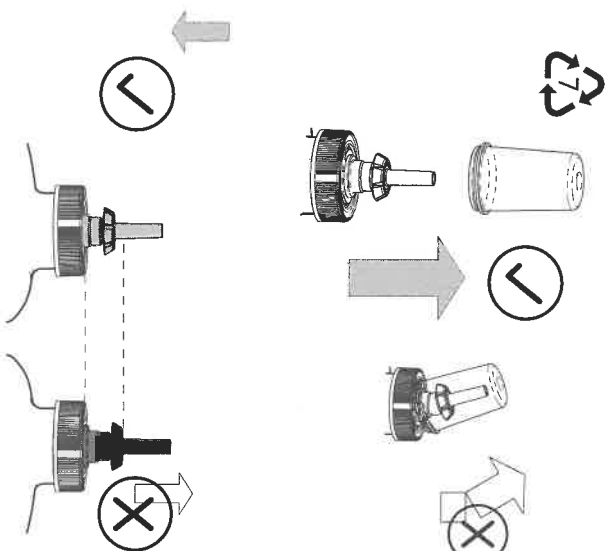
Push + Hold



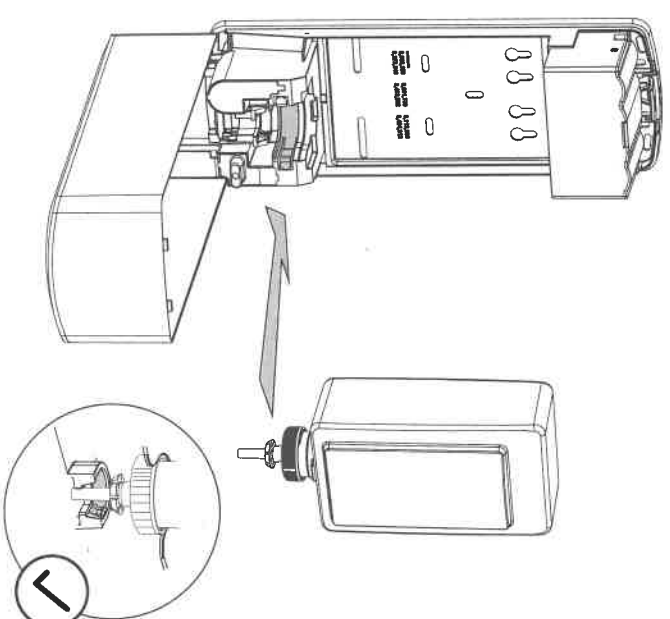
30

Seconds

5

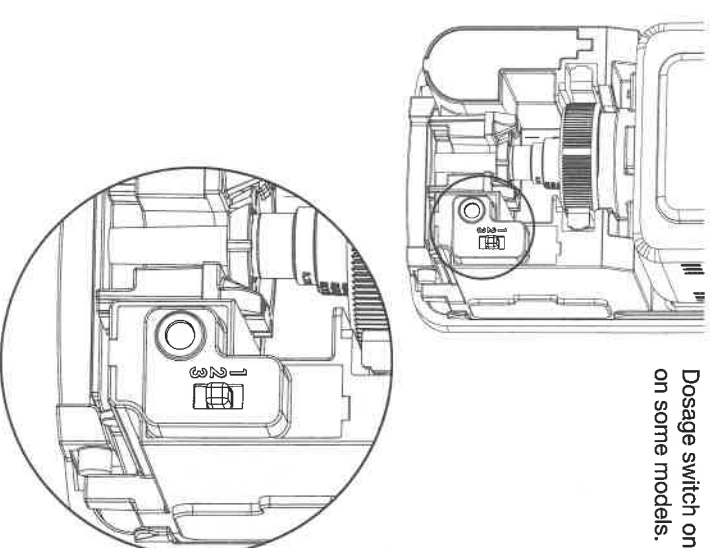


6



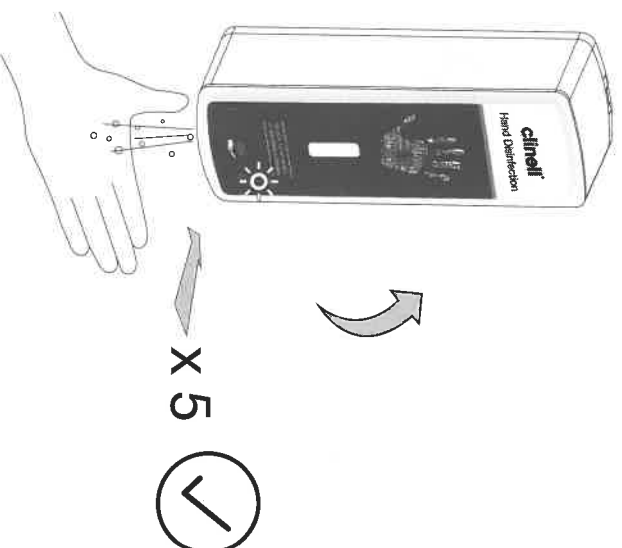
7

Dosage switch only
on some models.



8

Close dispenser cover and activate until
product dispenses to ensure pump is primed.



clinei®

Hand Disinfection

Cleaning and Maintenance

Clean exterior surfaces of the dispenser using warm water and mild soap. DO NOT USE ABRASIVE CLEANSERS. Dry with a soft cloth.

L.E.D. Light Meaning

1. Solid Red = Cover Open
2. Green = In Use
3. Flashing Red = Low Battery

Cautions

1. It is the installer's responsibility to ensure installation of unit complies with all applicable codes, standards and regulatory requirements.
2. Do not install this dispenser above heat sources or near sources of ignition/flame.
3. Do not install where a failure of the mounting system or dripping of product from hands may cause damage to equipment or create a potential safety hazard.

GAMA Healthcare Ltd., 2 Regal Way, Watford, Hertfordshire, WD24 4YJ.
T: +44 (0)20 7993 0030 E: info@gamahealthcare.com www.gamahealthcare.com

gama
healthcare